

WINDOWS 10 ENTERPRISE – AUTOPILOT – DEPLOYMENT – AZURE – INTUNE - MDM

1. Create Virtual Machine
2. Install Operating System Windows 10 Enterprise x64
3. At first restart you will be asked to select the region. Here don't do anything. Just follow my instruction
4. Press Shift+F10 – you will get command prompt
5. Type PowerShell to get PowerShell Prompt
6. At the prompt type this command and follow my screen shot
7. **Install-Script -Name Get-WindowsAutoPilotInfo**

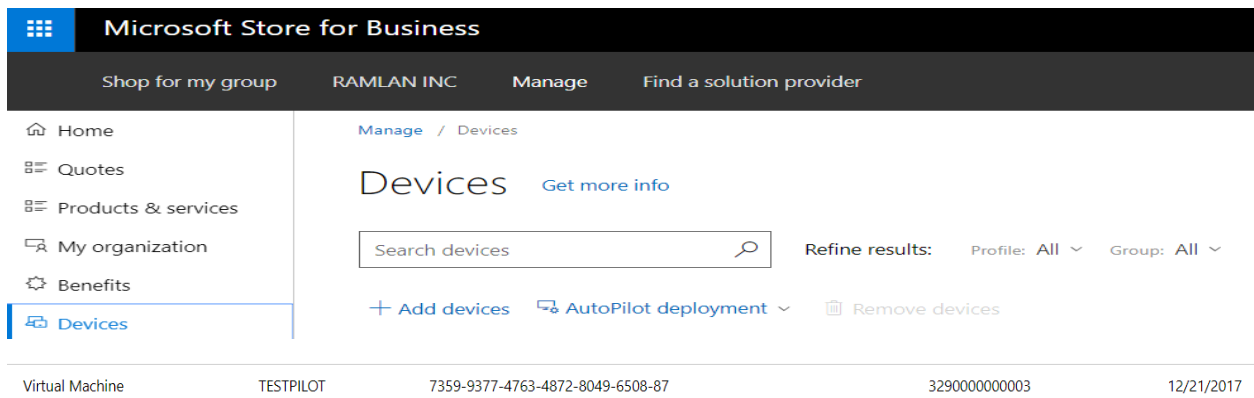
```
PS C:\WINDOWS\system32> Install-Script -Name Get-WindowsAutoPilotInfo

PATH Environment Variable Change
Your system has not been configured with a default script installation path yet, which means you can only run a script by specifying the full path to the script file. This action places the script into the folder 'C:\Program Files\WindowsPowerShell\Scripts', and adds that folder to your PATH environment variable. Do you want to add the script installation path 'C:\Program Files\WindowsPowerShell\Scripts' to the PATH environment variable?
[Y] Yes [N] No [S] Suspend [?] Help (default is "Y"): Y

NuGet provider is required to continue
PowerShellGet requires NuGet provider version '2.8.5.201' or newer to interact with NuGet-based repositories. The NuGet provider must be available in 'C:\Program Files\PackageManagement\ProviderAssemblies' or 'C:\Users\administrator\AppData\Local\PackageManagement\ProviderAssemblies'. You can also install the NuGet provider by running 'Install-PackageProvider -Name NuGet -MinimumVersion 2.8.5.201 -Force'. Do you want PowerShellGet to install and import the NuGet provider now?
[Y] Yes [N] No [S] Suspend [?] Help (default is "Y"): y

Untrusted repository
You are installing the scripts from an untrusted repository. If you trust this repository, change its InstallationPolicy value by running the Set-PSRepository cmdlet. Are you sure you want to install the scripts from 'PSGallery'?
[Y] Yes [A] Yes to All [N] No [L] No to All [S] Suspend [?] Help (default is "N"): y
PS C:\WINDOWS\system32> cd "C:\Program Files\WindowsPowerShell\Scripts"
```

8. Change Directory to cd "C:\Program Files\WindowsPowerShell\Scripts"
9. Type Hostname to get the computer name so we can get device ID, Product ID & Hardware Hash that we have to upload at Microsoft for Business site.
10. Run this command to get above info. For this example, my Hostname is **DESKTOP-T530F6F**
11. **.\Get-WindowsAutoPilotInfo.ps1 -ComputerName DESKTOP-T530F6F -OutputFile .\DESKTOP-T530F6F.CSV**
12. Your CSV file will have Device ID, Product ID and Hardware Hash
13. Copy CSV file to network location – Example – copy DESKTOP-T530F6F.CSV [\\dc1\c\\$](#)
14. Now we will login to Microsoft for Business site - <https://businessstore.microsoft.com/en-us/>
15. Login with your credentials
16. Click Manage – Devices – Add Devices – Select CSV file we saved at network location (\\dc1\c\$)



The screenshot shows the Microsoft Store for Business interface. The top navigation bar includes 'Shop for my group', 'RAMLAN INC', 'Manage', and 'Find a solution provider'. The left sidebar contains links to 'Home', 'Quotes', 'Products & services', 'My organization', 'Benefits', and 'Devices'. The main content area is titled 'Manage / Devices' and 'Devices'. It features a search bar labeled 'Search devices', a 'Refine results' section with 'Profile: All' and 'Group: All' dropdowns, and buttons for '+ Add devices', 'AutoPilot deployment', and 'Remove devices'. Below this is a table with the following data:



Virtual Machine	TESTPILOT	7359-9377-4763-4872-8049-6508-87	3290000000003	12/21/2017

You will see AutoPilot machine under Devices. Now we can create AutoPilot Deployment Profile.

Click AutoPilot deployment – Create a Profile – Below is the screen shot – Give profile name – Turn on Skip Privacy Settings, Disable Local Admin, Skip End User Agreement


[Manage](#) / [Devices](#) / Create profile

Create a new AutoPilot deployment profile


AutoPilot deployment default features  

☒ On


Skip Cortana, OneDrive and OEM registration setup pages
Automatically setup for work or school
Sign in experience with company brand

Skip privacy settings 

☐ Off

Disable local admin account creation on the device 

☐ Off

Skip End User License Agreement (EULA) [What does this do?](#) 

☐ Off

Cancel

Create


After that Select the device and assign the profile that we created– Click Refresh to make the profile is applied to AutoPilot device – Here is an example screen shot

[Manage](#) / [Devices](#)

Devices [Get more info](#)

Refine results: Profile: All Group: All

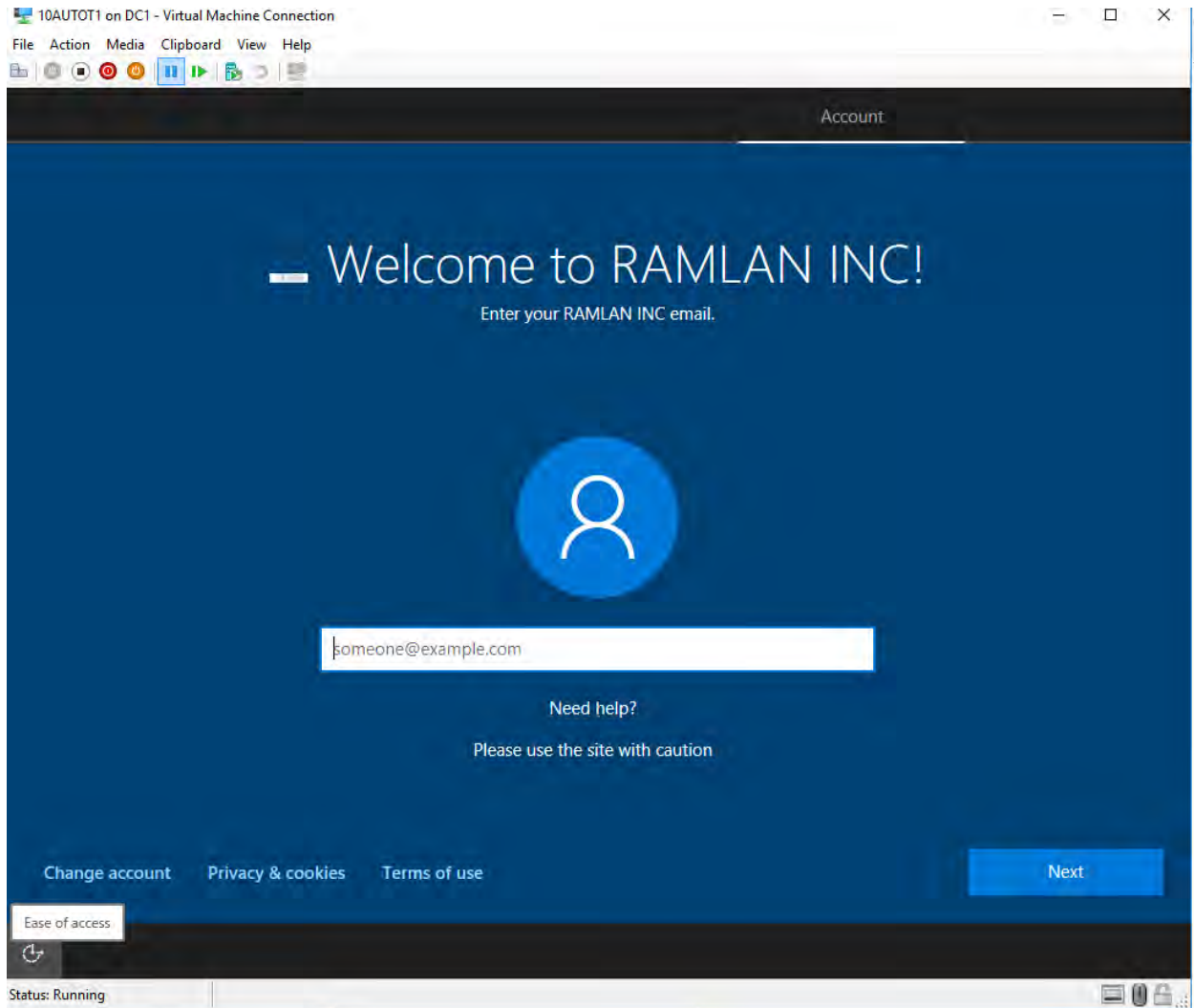
[+ Add devices](#) [AutoPilot deployment](#)  [Remove devices](#)

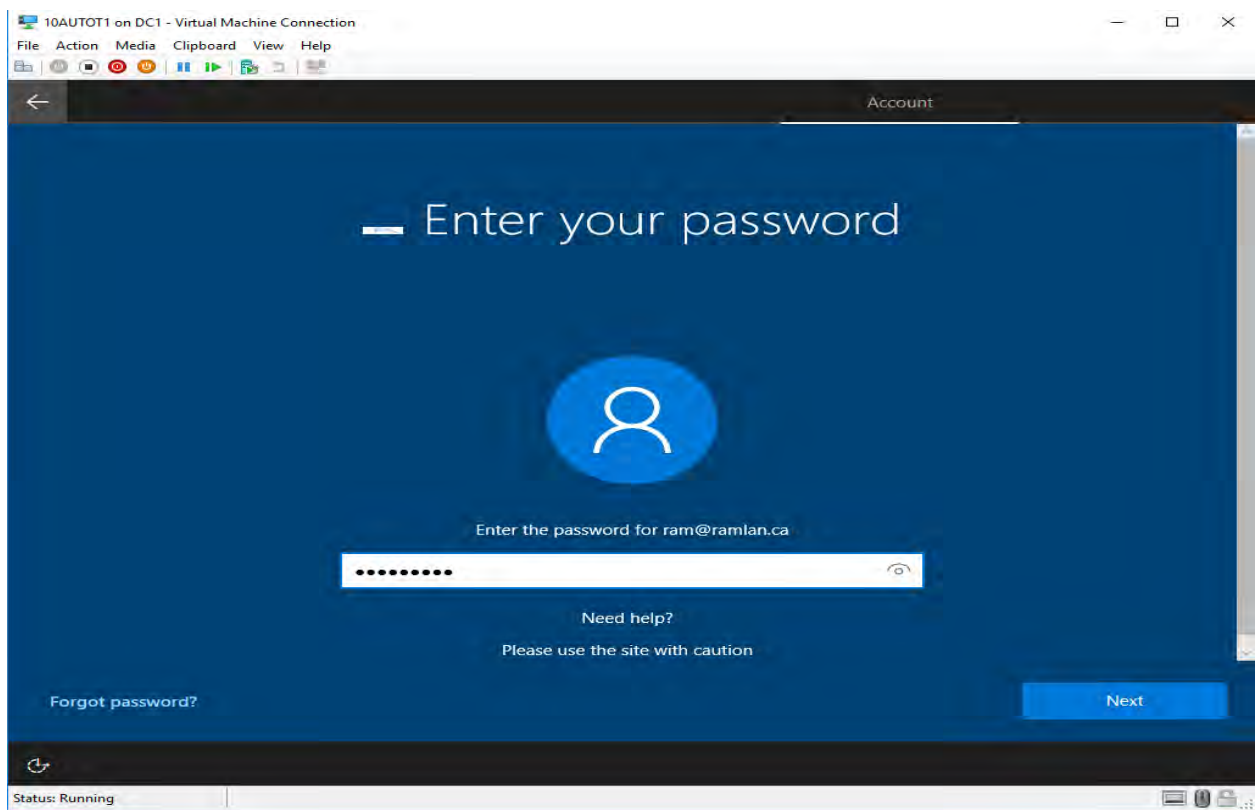
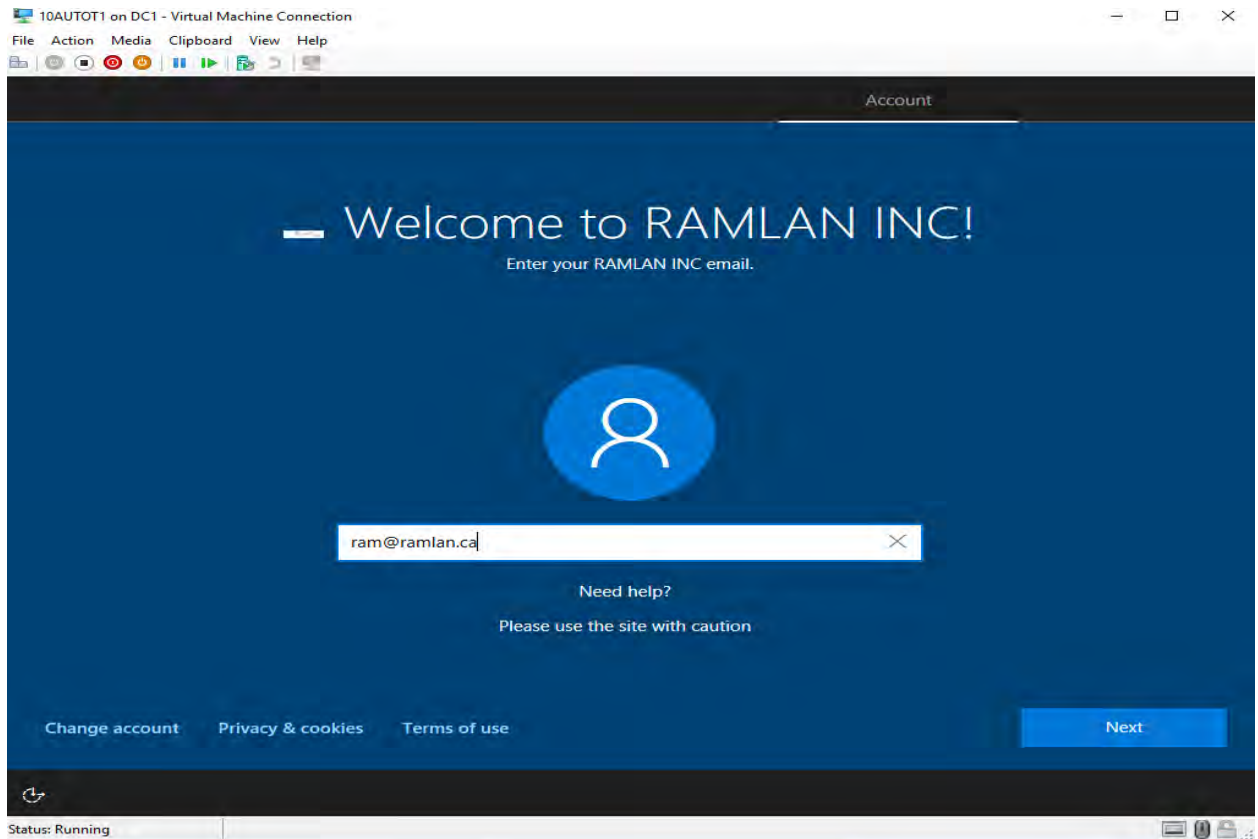
<input type="checkbox"/>	Device model	Profile	Serial number	Windows product ID	Date added 
<input type="checkbox"/>	Virtual Machine	TESTPILOT	7359-9377-4763-4872-8049-6508-87	3290000000003	12/21/2017

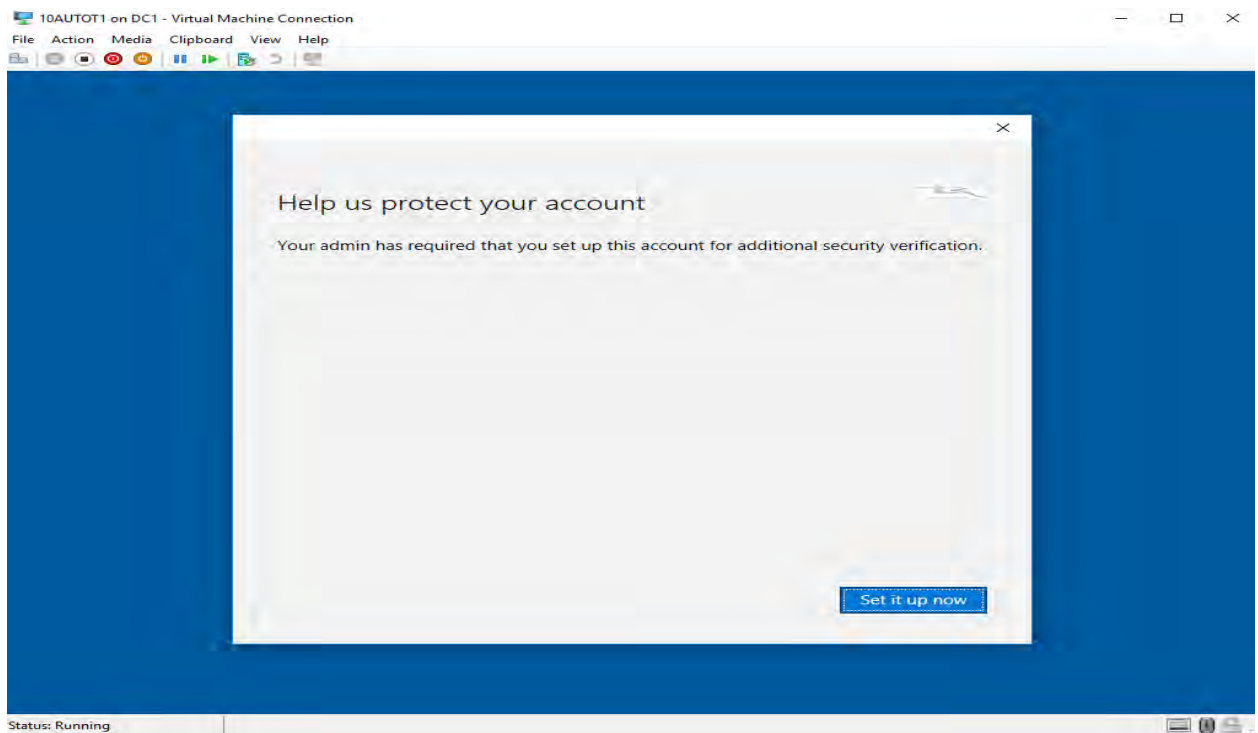
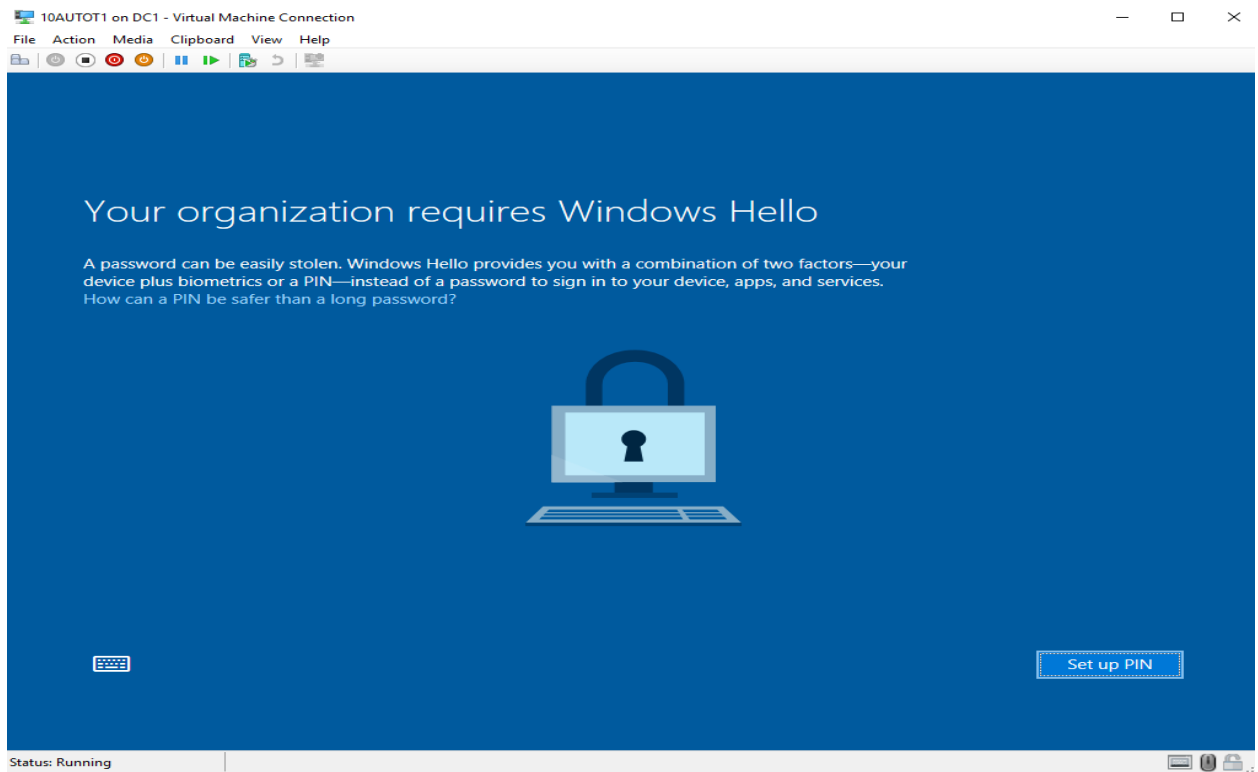
You can log out from Microsoft for Business site

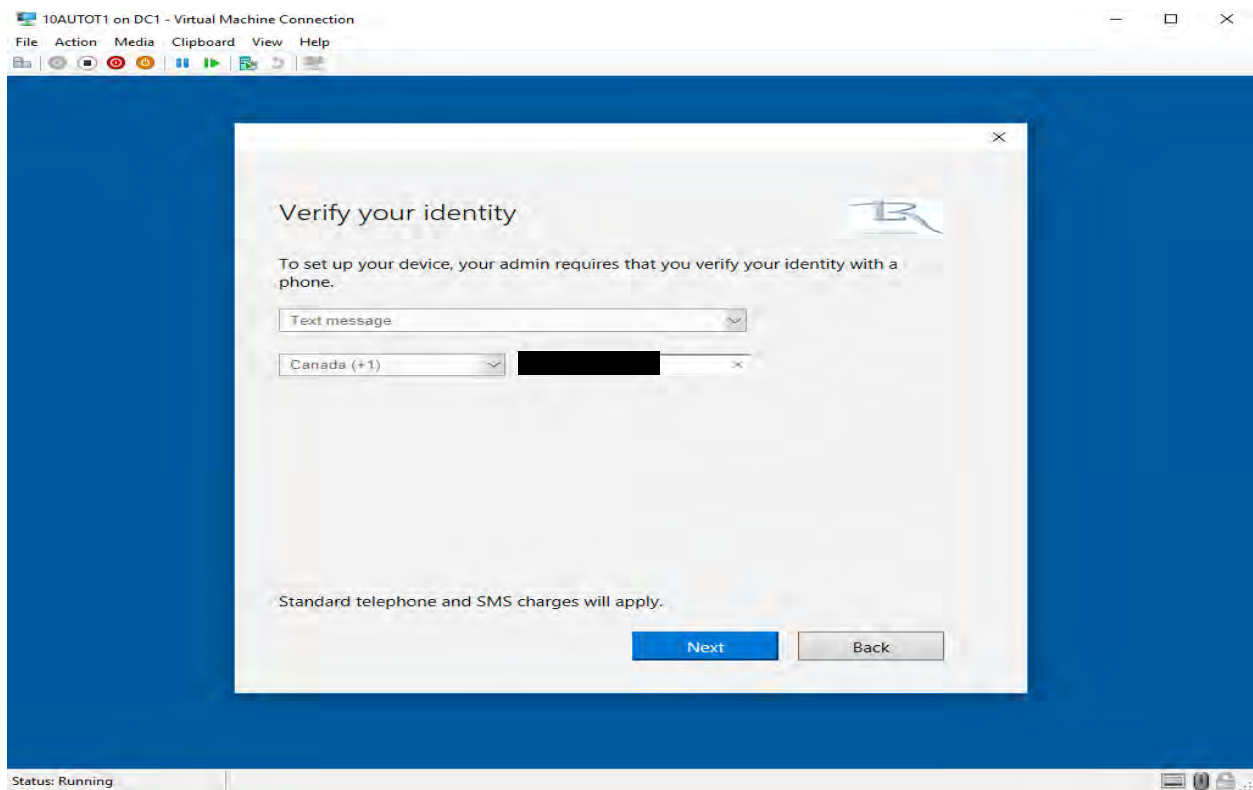
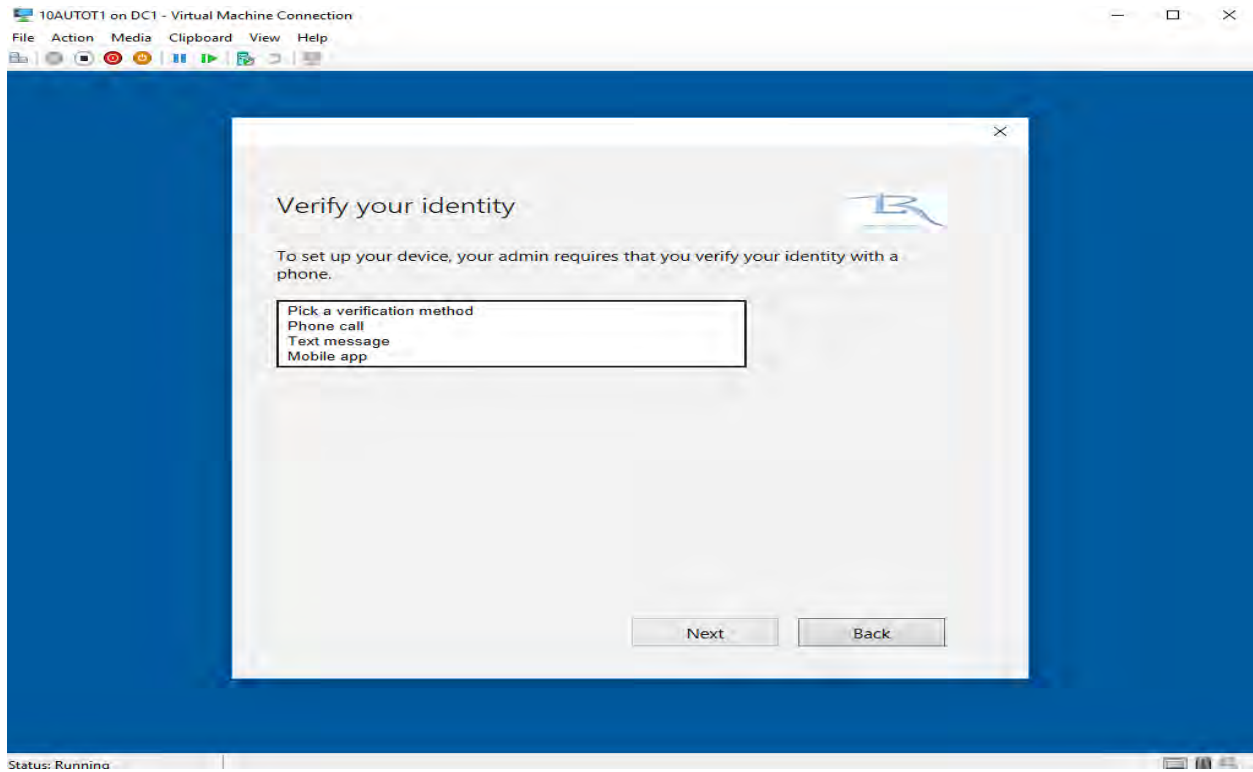
Now power on your AutoPilot Machine

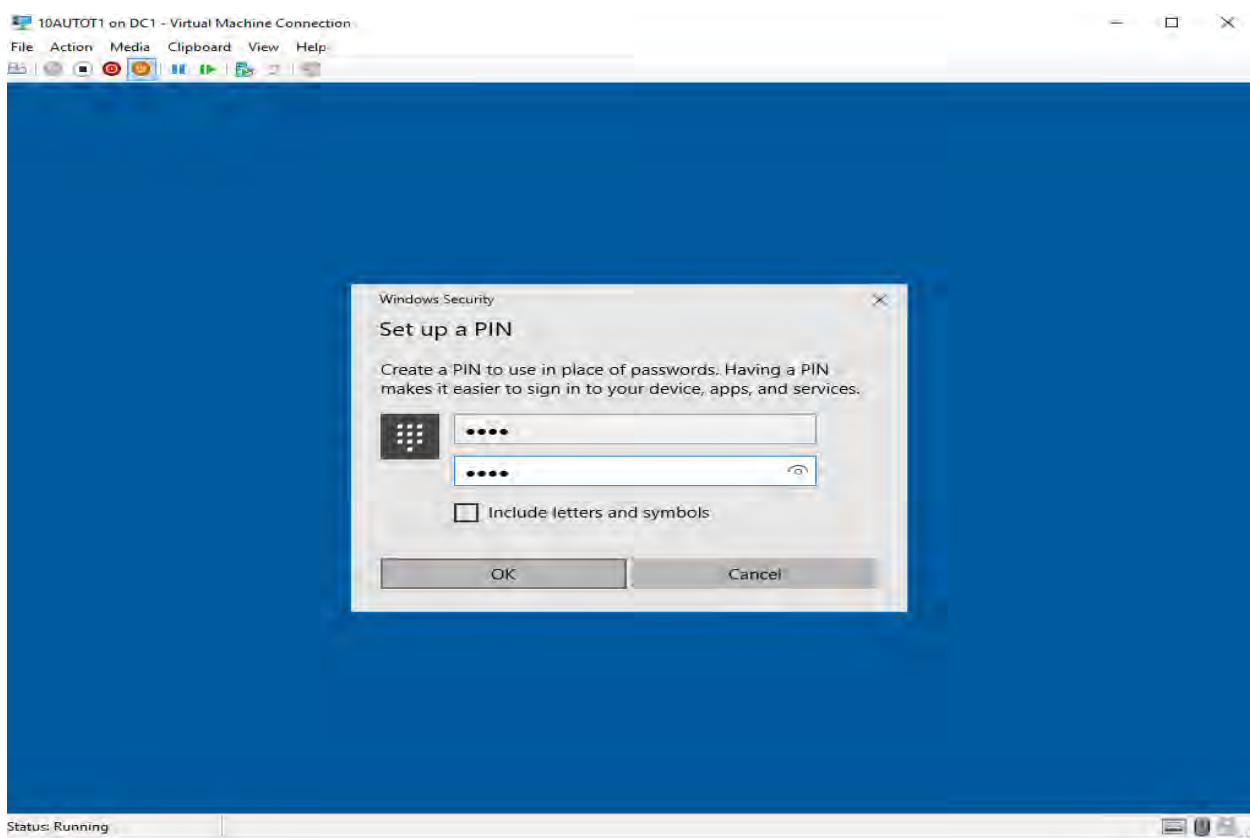
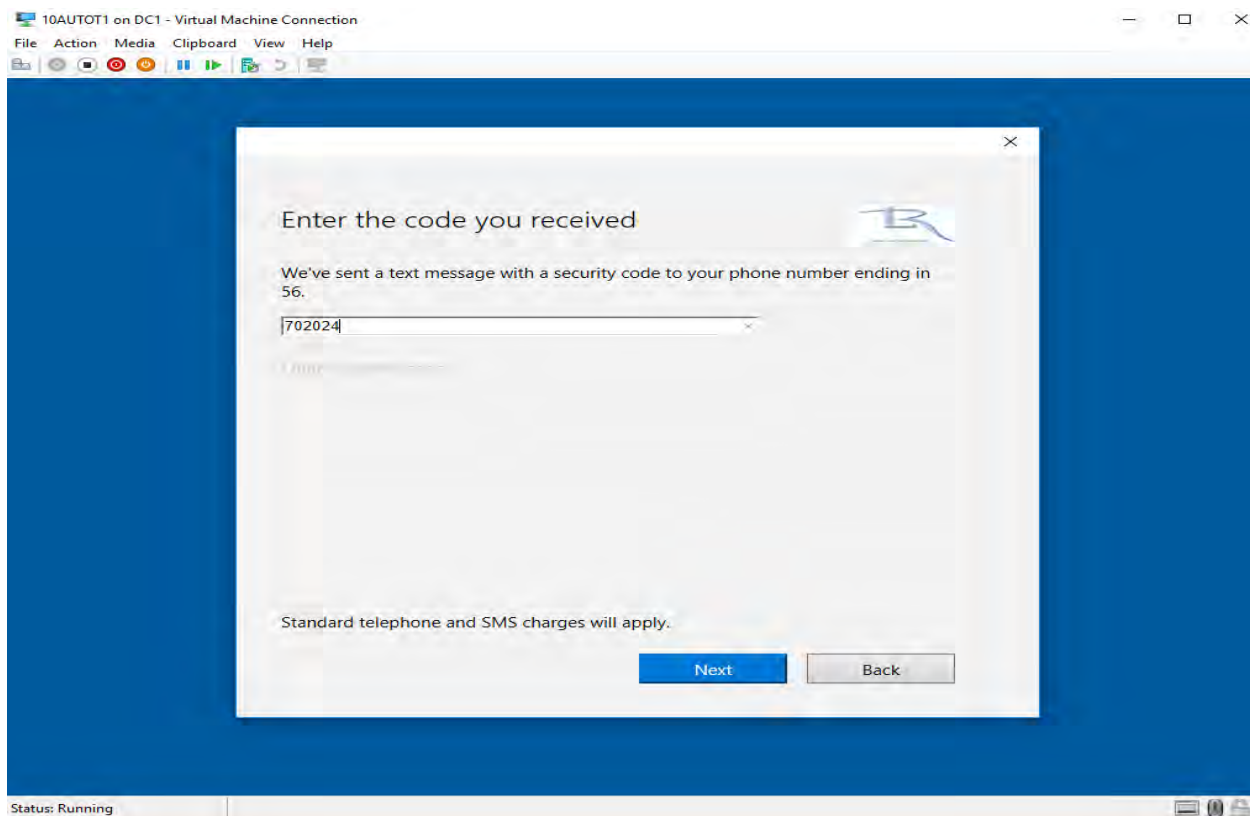
First thing you will see is select the Region and Keyboard Layout – After that you will see the following.

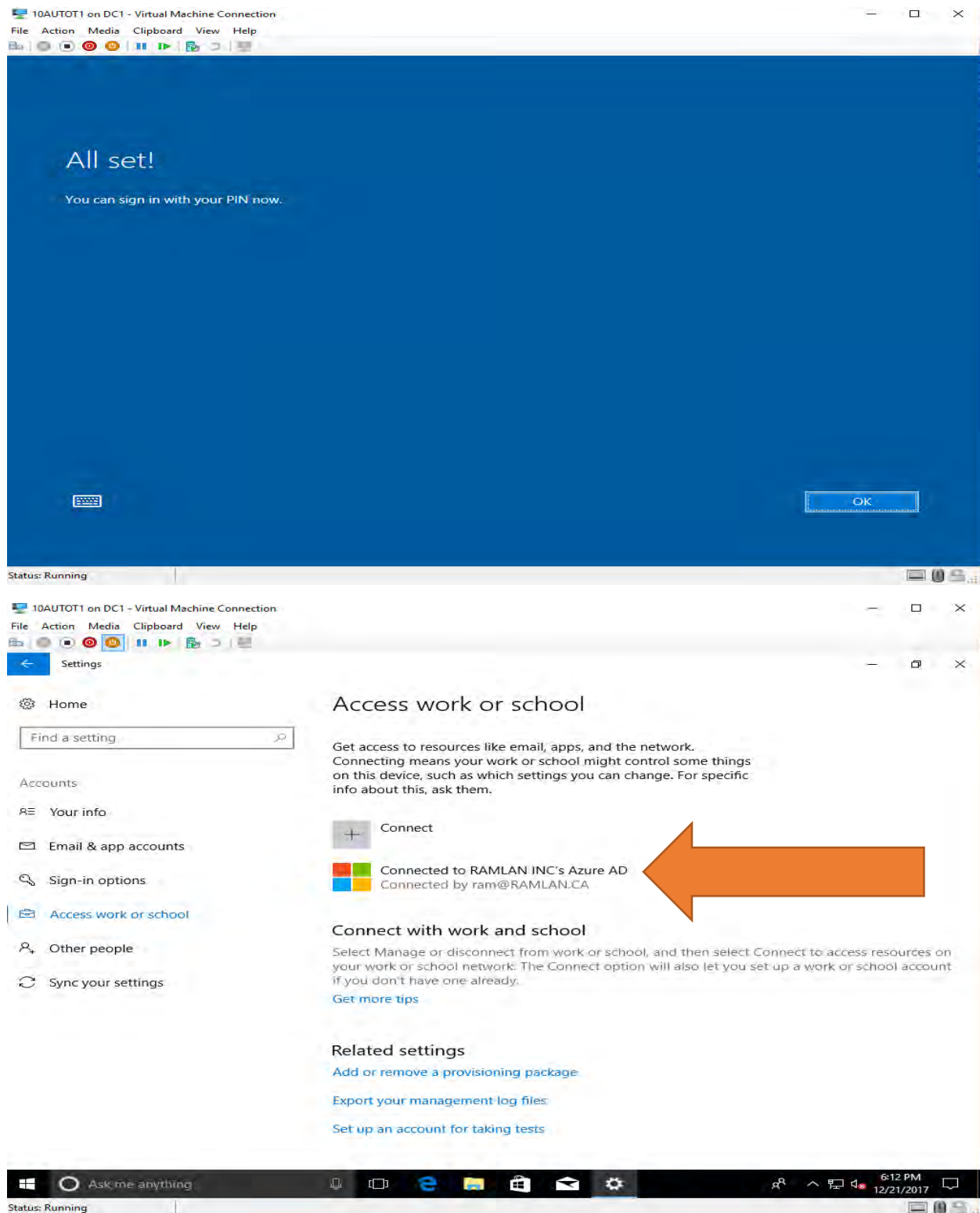












As you can see from above screen shot – the machine is joined to Azure Active Directory and not to Local Domain

You still have the option to join Local Domain, if you want. That would defeat MDM purpose.

I logged into Azure and checked Intune for Device Enrollment – I am able to see AutoPilot Machine in Azure (**DESKTOP-T530F6F**)



Microsoft Intune > Devices > Azure AD devices

Search: ram@company.com

Columns

NAME	ENABLED	OS	VERSION	JOIN TYPE	OWNER	MEM	COMPLIANT
FS	Yes	Windows Server 2...	10.0 (14393)	Hybrid Azure AD joined	N/A	None	N/A
VMM	Yes	Windows Server 2...	10.0 (14393)	Hybrid Azure AD joined	N/A	None	N/A
DC1	Yes	Windows Server 2...	10.0 (14393)	Hybrid Azure AD joined	N/A	None	N/A
PAR	Yes	Windows Server 2...	10.0 (14393)	Hybrid Azure AD joined	N/A	None	N/A
APPV	Yes	Windows Server 2...	10.0 (14393)	Hybrid Azure AD joined	N/A	None	N/A
CM	Yes	Windows Server 2...	10.0 (14393)	Hybrid Azure AD joined	N/A	None	N/A
DESKTOP-T530F6F	Yes	Windows	10.0.16299.15	Azure AD joined	Ram	Microsoft Intune	Yes

This concludes Windows 10 AutoPilot Demonstration.

Thanks

Ram

21st Dec 2017